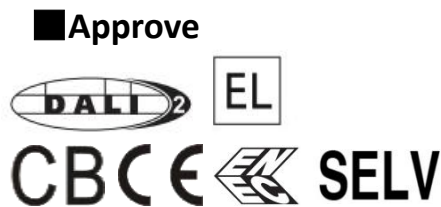


## 75W DALI + PUSH Dimming power supply



### Features

- Class I , SELV, Built-in
- Input Voltage 220-240VAC
- Protections: SCP/OLP/OVP/OTP
- Power Factor: >0.95
- Efficiency : 90%
- Adjustable Output Current with NFC
- Support DALI-2,Push dimming
- Suitable for emergency lighting acc. to EN 50172
- EOFi=15%
- DALI maintainace(Part 251,252,253)
- 5 years warranty

### Applications

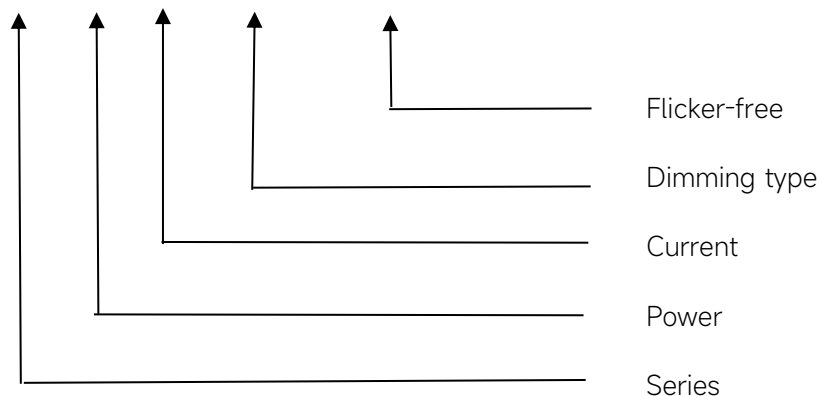
- Linear light

### ◆ Description

FMS-75-1800 DALI-2 LN is a 75W constant current LED driver that operates from 198-264Vac input with 1050 to 1800mA output current and a forward voltage range from 15 to 51Vdc. The output current is adjustable. by NFC.With it's compact dimensions from 280 x 30 x 21 mm. It is easy to integrate in linear light products. To ensure trouble-free operation, protection is provided against output short circuit and over Load.

### ◆ Model code

#### FMS-75-1800 DALI-2 LN



## ◆ Specification

Output	Constant Current	1050-1250mA	...mA	1651-1800mA
	Voltage Range	15-51VDC	...VDC	15-42VDC
	Unload voltage Max.	59VDC		
	Current Accuracy	±5%		
	Output LF current ripple(≤120Hz)	±5%		
	SVM	≤0.4		
	Pst	≤1		
	Efficiency(Typ.)	90%		
	EOFI	15%		
Input	Rated input voltage	220-240V		
	Range of input voltage	198-264VAC		
	Maximum voltage	300VAC@1 h maximum,unit might not operate in this abnormal condition		
	Range input voltage(DC)	176-280VDC		
	Frequency(Hz)	0/50/60 Hz		
	Displacement factor	>0.95		
	Power Factor(Typ.)	>0.95 @full load		
	Input Current	0.48A max.		
	Start-up time	< 0.8S		
	Switch over time(AC/DC mode)	< 0.4S		
	No Load Power	≤0.3W		
	Standby Power	≤0.3W		
	Network standby power	≤0.3W		
	THD (Typ.)	<10%		
Dimming	Dimming	YES		
	Dimming mode	DALI-2 (IEC 62386-101,102,207,251,252,253) & Push Dimming (Corridor Function)		
	Dimming depth	1%		
	Dimming current range	1 ~100%		
Protection	Over Load Protection	103-120% YES/Latch off		
	Over Voltage Protection	59VDC YES/Latch off		
	Short circuit Protection	YES/Latch off		
	Over Temperature Protection	YES/Auto Resume		
Capability	Surge capability (L-N)	1KV		
	Surge capability (L/N-Ground)	2KV		
Environment	Operating Temperature	-25°C~+60°C@1050-1400mA; -25°C~+50°C@1401-1800mA		
	Humidity	10%-90%RH		
	Tc	85°C		

	Storage Temperature	-25°C~+85°C
	Lifetime	>50000h,@Tc=85°C
	Ripple&Noise	25dB(A)@20CM
Surface	Dimension	280 x 30 x 21(LXWXH)mm
	material	metal case
Standards	Safety	IEC61347- 1, IEC61347-2- 13;EN61347- 1, EN61347-2- 13;EN61347- 1, EN61347-2- 13, EN62384
	EMC	EN55015, EN61000-3-2, EN61000-3-3, EN61547;EN61000-4-2,3,4,5,6,8,11, EN61547
	ErP	Erp2.0 EU 2019/2020
	RoHS	RoHS (2011/65/EU) (EU)2015/863
DALI performance	EN 62386-101 (DALI-2) EN 62386-102 (DALI-2) EN 62386-207 (DALI-2,including part251,252,253)	
Note	<p>1.All parameters NOT specially mentioned are measured at 230VAC input , full load and 25°C of ambient temperature.</p> <p>2.Ripple &amp; Noise are measured at 20MHz of bandwidth</p> <p>3.The DC input for this product is only used for emergency lighting and applies to functional and safety requirements , EMC is not considered.</p> <p>4.DALI protocol comprises 16 groups and 64 addresses.Up to 32 drivers can perform the PUSH dimming at the same time when utilizing one push button.</p> <p>5.Unload voltage Max. is measured 5 seconds after power-on.</p> <p>6.EL compatible with IEC 61347-2-13 Annex J, compatible with EN 60598-2-22 emergency lighting fixtures, compatible with EN 50172 central battery system applications.</p> <p>7.All Astralux power supply are complied with EMI regulations. Since they are belong to component and will be installed inside system enclosure. When they are integrated into a system, the EMI characteristics of the system must be re-verified again.</p>	

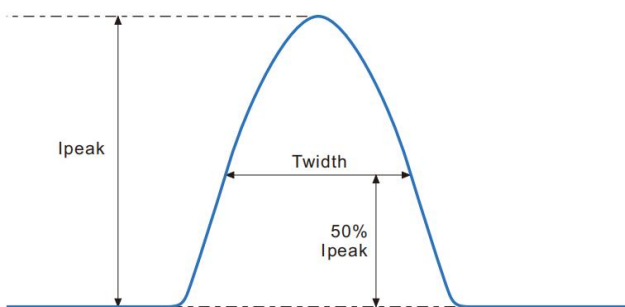
## ◆ Parameter

Number	Output			
	Current (mA)	Voltage (VDC)	Voltage No load (VDC)	Power (W)
*1	1050-1250	15-51VDC	59	63.8
2	1251-1450	15-50VDC		72.5
3	1451-1550	15-47VDC		73
4	1551-1650	15-45VDC		74.3
5	1651-1800	15-42VDC		75.6

\* Factory default

## ◆ Inrush Current

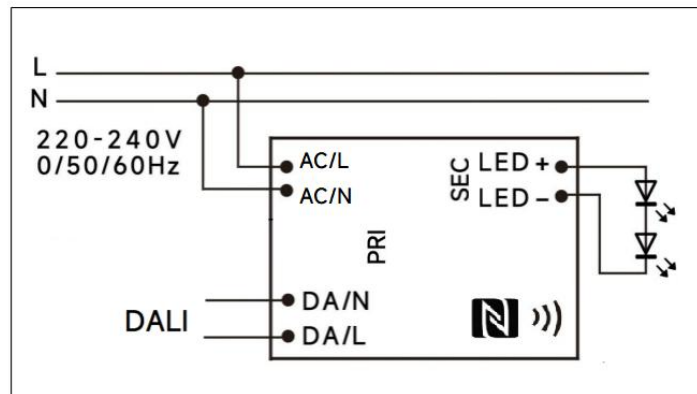
$I_{peak}$	Twidth	B10	B16	B20	C10	C16	C20
A	$\mu s$	pcs	pcs	pcs	pcs	pcs	pcs



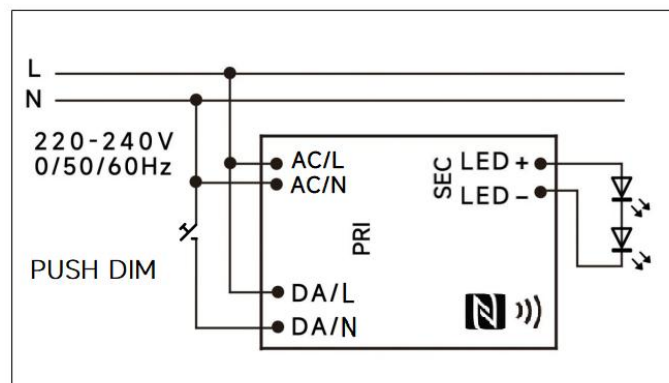
Remarks:

- 1.The number of drives mounted under different MCBs in the table is the maximum value. Please do not exceed this number during installation.
- 2.Different brands and models of miniature circuit breakers, the number of drives mounted will be slightly different.

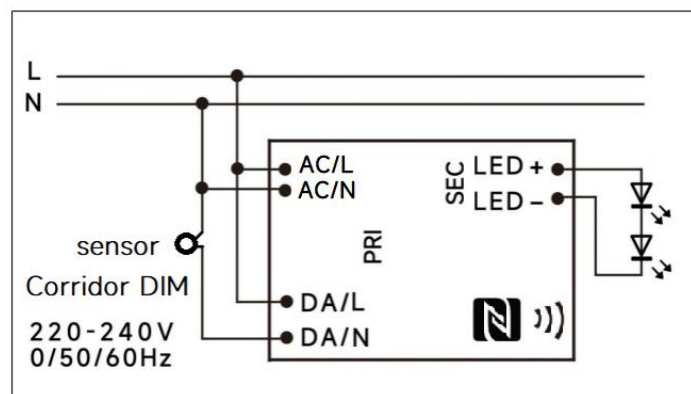
## ◆ Wiring diagram



DALI dimming application



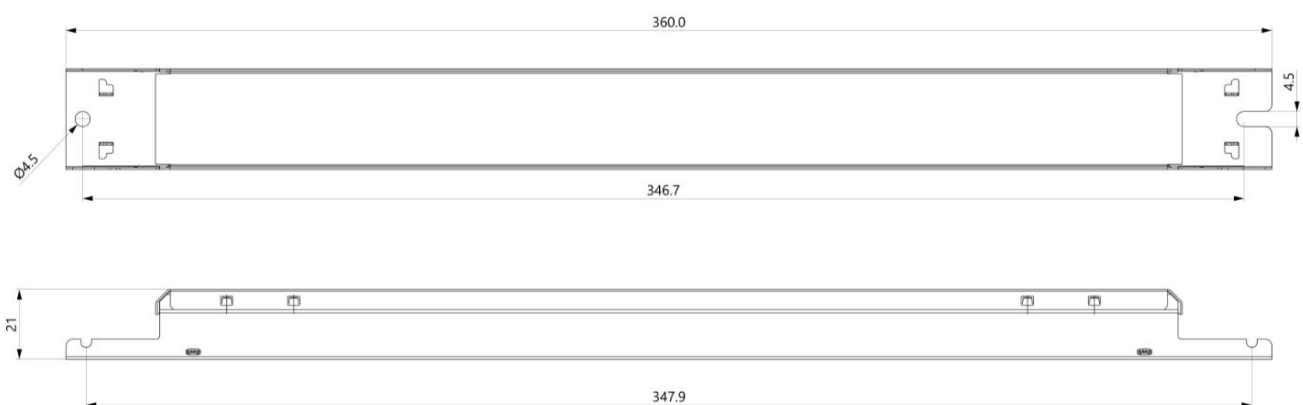
PushDIM dimming application



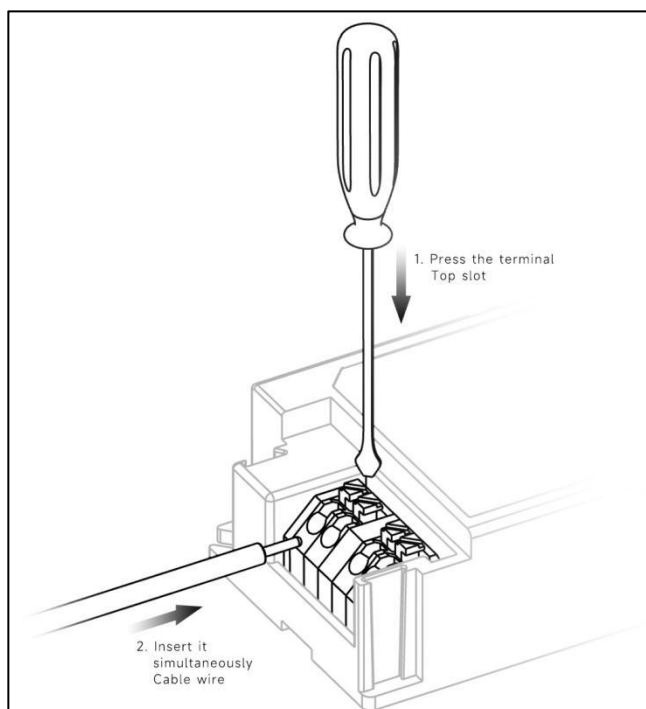
Corridor DIM dimming application

## ◆ Label

## ◆ 2D diagram



Termina



## ◆ Wiring & Connections

Specification item		Value (Unit )
Input	Input wire cross-section	0.5...1.5 mm <sup>2</sup>
	Input wire gauge.	16...20 AWG
	Input wire strip length	7...9mm
Output	Output wire cross-section	0.5...1.5 mm <sup>2</sup>
	Output wire gauge.	16...20 AWG
	Output wire strip length	7...9mm

# ◆ Curve for FMS-75-1800 DALI-2 LN, $I_o=1800\text{mA}$

Lifetime vs. Temperature Curve

Efficiency vs. Load

Power Factor Characteristics

THD vs. Load

Preliminary



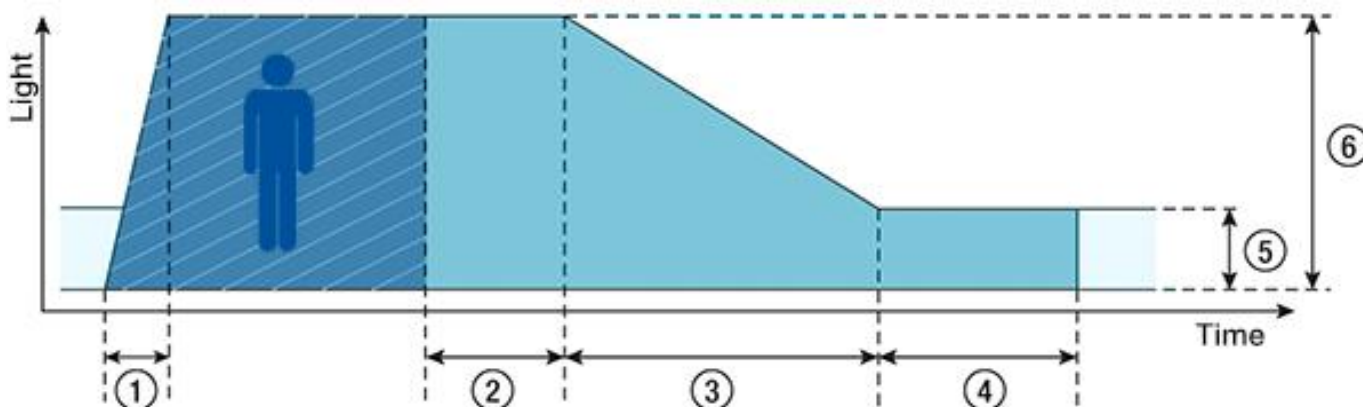
## ◆ Push dimming operation

Action	Action duration	Function
Short push	<0.5s	Turn on/off
Short push twice	<0.5s	LED on: Save current brightness level LED off: Delete saved level and turn on at 100% brightness
Short push five times	<3s	Quit Corridor mode
Long push	0.5-14s	Dimming up or down
Long push	15s-2mins	Sync all LEDs to be 100% brightness
Long push	>2mins	Enter Corridor mode - LED keep 100% brightness for 2mins. Then brightness will turn to be 10% within 32s if no action during 2mins 100% brightness.

### Note:

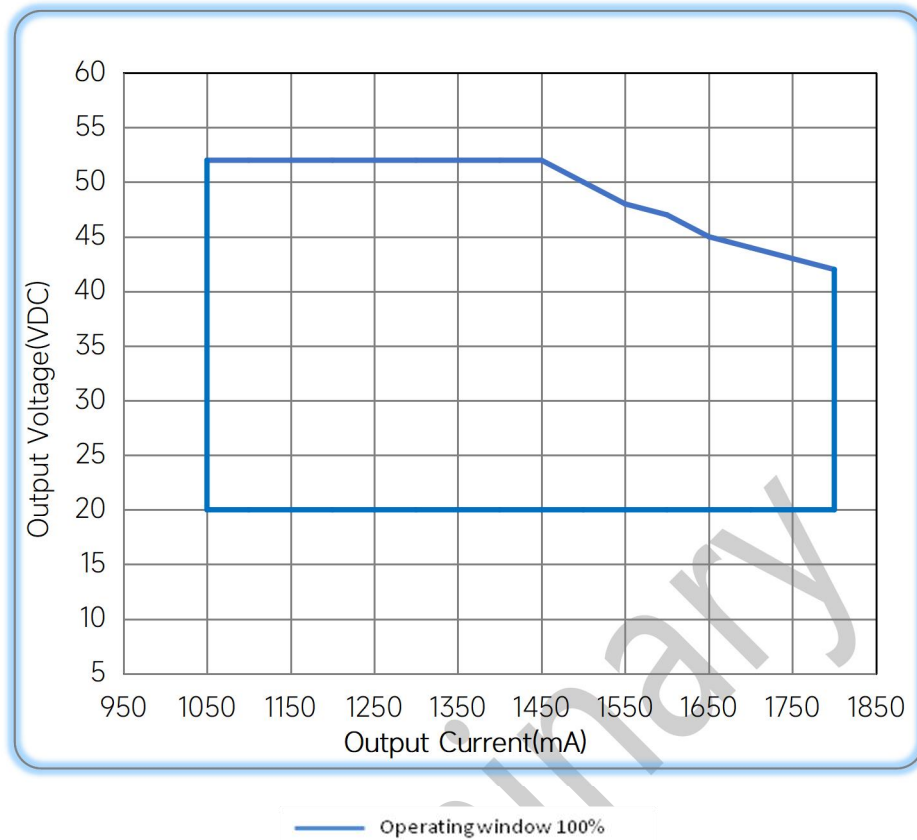
- 1.The factory default brightness is at 100%.
- 2.Up to 30 drivers can perform the PUSH dimming at the same time when utilizing one common push button
- 3.The maximum length of the cable from the push button to the last driver is 200 meters.

## ◆ Corridor mode



- ◆ **① Fade-in time (0.5s)**: the time that starts as soon as the presence of a person is detected. During the fade-in time the luminous intensity is faded up to the presence value.
- ◆ **② Run-on time (120s)**: the time that starts as soon as the presence of a person is no longer detected. If the presence of a person is detected again during the run-on time the run-on time is restarted from zero. If no presence is detected during the run-on time the fade time is started as soon as the run-on time expires.
- ◆ **③ Fade time (32s)**: the time during which the luminous intensity is faded from the presence value to the absence value.
- ◆ **④ Switch-off delay (Never Off)**: the time during which the absence value is held before the lighting is switched off. Depending on the profile selected the switch-off delay may have different values or may not be defined.
- ◆ **⑤ Absence value (default: 10 %)**: the luminous intensity when there is no person present.
- ◆ **⑥ Presence value (default: 100 %)**: the luminous intensity when persons are present.

## ◆ Operating window



## ◆ Revision Updates

ITEM	BEFORE	AFTER	VERSION	DATE
Initial			A	2023/05/05

Remark: The final interpretation of the contents of the specification belongs to Astralux.

E-mail: [sales@astralux-driver.com](mailto:sales@astralux-driver.com)  
 Website : [www.astralux-driver.com](http://www.astralux-driver.com)